

PART OF N.E. 1/4 OF SECTION 29, T.7N., R.1W., S.L.B. & M.

TAXING UNIT: 10

IN NORTH OGDEN CITY
SCALE 1" = 100'

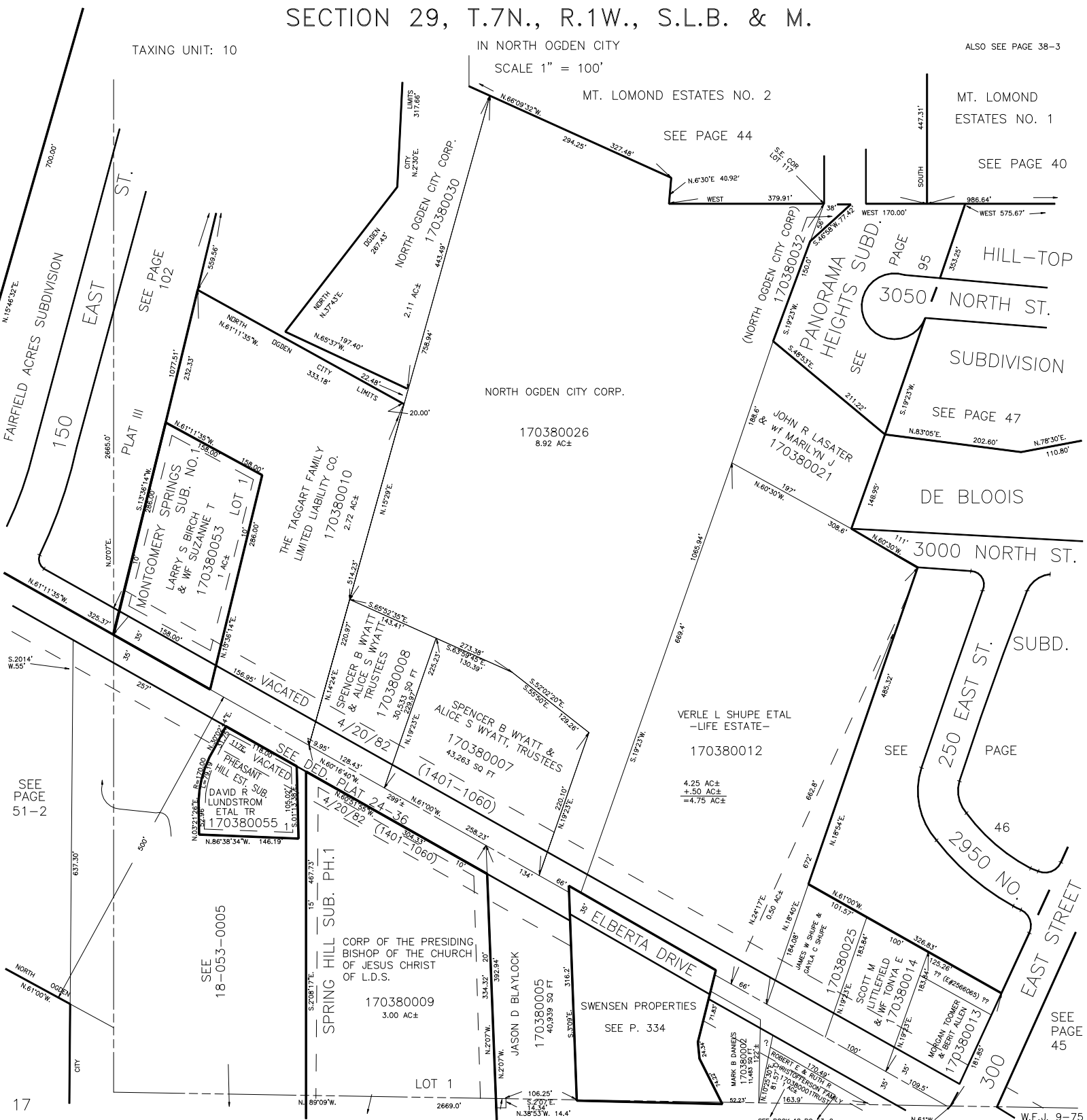
ALSO SEE PAGE 38-3

MT. LOMOND ESTATES NO. 2

MT. LOMOND ESTATES NO. 1

SEE PAGE 44

SEE PAGE 40



FAIRFIELD ACRES SUBDIVISION
150
SEE PAGE 102

SEE PAGE 51-2

SEE 18-053-0005

17

NORTH OGDEN CITY CORP.
170380026
8.92 AC±

MONTGOMERY SPRINGS SUB. NO. 1
LARRY S BIRCH & WIFE SUZANNE T
170380053
1 AC±

THE TAGGART FAMILY LIMITED LIABILITY CO.
170380010
2.72 AC±

VACATED
SPENCER B WYATT & ALICE S WYATT TRUSTEES
170380008
30,537 SQ FT
ALICE S WYATT & SPENCER B WYATT TRUSTEES
170380007
43,263 SQ FT
(1401-1060)

VACATED
PHEASANT HILL EST. SUB.
DAVID R LUNDSTROM ETAL TR
170380055

CORP OF THE PRESIDING BISHOP OF THE CHURCH OF JESUS CHRIST OF L.D.S.
170380009
3.00 AC±

JASON D BLAYLOCK
170380005
40,939 SQ FT

SWENSEN PROPERTIES
SEE P. 334

VERLE L SHUPE ETAL -LIFE ESTATE-
170380012
4.25 AC±
+ .50 AC±
= 4.75 AC±

(NORTH OGDEN CITY CORP)
170380032

PANORAMA HEIGHTS SUBD.
SEE PAGE 95

JOHN R LASATER & WIFE MARILYN J
170380021

DE BLOIS
3000 NORTH ST.

250 EAST ST. SUBD.
PAGE 46

SCOTT M LITTLEFIELD & WIFE TONYA E
170380014

MICHAEL TOOMEY & WIFE ALLEN
170380013

MARK B DANIELS
170380002

ROBERT E & LINDA R CHRISTENSEN
170380001

SEE PAGE 45